



ELECTRONIC COPY

LG727553174
Report verification at igi.org



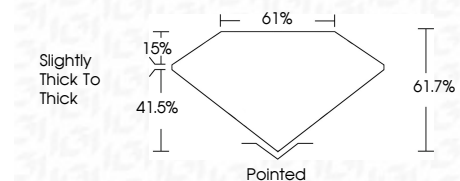
August 12, 2025
IGI Report Number LG727553174
Description LABORATORY GROWN DIAMOND

Shape and Cutting Style CUT CORNERED RECTANGULAR MODIFIED BRILLIANT

Measurements 17.30 X 10.96 X 6.76 MM

GRADING RESULTS

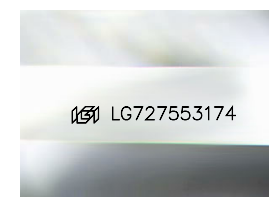
Carat Weight 11.88 CARATS
Color Grade G
Clarity Grade VVS 2



ADDITIONAL GRADING INFORMATION

Polish EXCELLENT
Symmetry EXCELLENT
Fluorescence NONE
Inscription(s) IGI LG727553174

Comments: This Laboratory Grown Diamond was created by Chemical Vapor Deposition (CVD) growth process. Type IIa



Sample Image Used

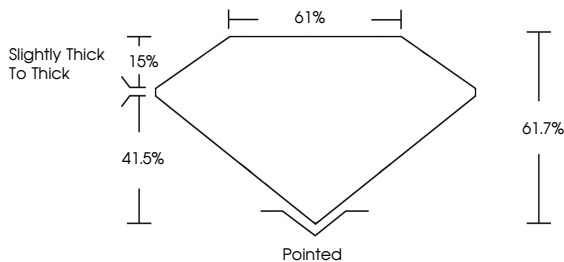
COLOR

D E F G H I J Faint Very Light Light

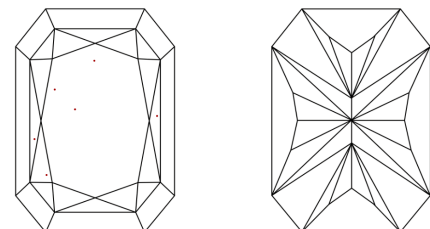
CLARITY

IF WS 1-2 VS 1-2 SI 1-2 I 1-3
Internally Flawless Very Very Slightly Included Very Slightly Included Slightly Included Included

PROPORTIONS



CLARITY CHARACTERISTICS



KEY TO SYMBOLS

Red symbols indicate internal characteristics.
Green symbols indicate external characteristics.

August 12, 2025
IGI Report Number LG727553174
Description LABORATORY GROWN DIAMOND
Shape and Cutting Style CUT CORNERED RECTANGULAR MODIFIED BRILLIANT
Measurements 17.30 X 10.96 X 6.76 MM

GRADING RESULTS

Carat Weight 11.88 CARATS
Color Grade G
Clarity Grade VVS 2

ADDITIONAL GRADING INFORMATION

Polish EXCELLENT
Symmetry EXCELLENT
Fluorescence NONE

Inscription(s) IGI LG727553174

Comments: This Laboratory Grown Diamond was created by Chemical Vapor Deposition (CVD) growth process. Type IIa



August 12, 2025
IGI Report No LG727553174
CUT CORNERED RECT. MODIFIED BRILLIANT
11.88 CARATS G
17.30 X 10.96 X 6.76 MM
VVS 2 61.7% 61%
Slightly thick to thick
Pointed EXCELLENT EXCELLENT NONE
None IGI LG727553174
Comments: This Laboratory Grown Diamond was created by Chemical Vapor Deposition (CVD) growth process. Type IIa